

# LINE LIGHT 1

Universal lighting solution with 1 LED lighting unit

LINE LIGHT 1 is a flexible lighting solution for universal application designed to be used anywhere where strong, efficient and concentrated light in a specific working area is needed.

With 1 complete lighting unit, the LINE LIGHT 1 is the perfect lighting solution on top of the workbench, anywhere in the workshop, in the service car, in the production etc. Compared to the previous version, **LINE LIGHT 1 has been upgraded from 1400 to 2750 lumen.**

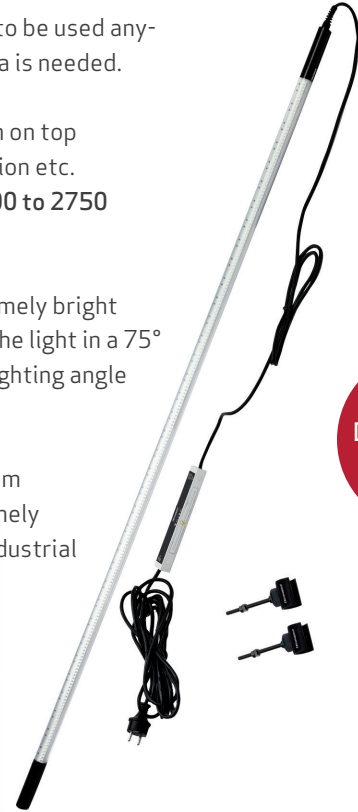
Compared to traditional 36W fluorescent tubes, LINE LIGHT 1 provides extremely bright illumination with low power consumption. It has a built-in prism that focuses the light in a 75° beam angle. This means that the lamp can be turned to provide the optimum lighting angle and illuminate the entire work area without blinding the mechanic.

It is constructed by a closed extruded acrylic profile (PMMA) with built-in prism containing a LED PCB and end-covers in black anodized aluminium. It is extremely sturdy, shock- and waterproof (IP67) to endure shocks and vibrations from industrial machinery and to resist wet and dirty workshop environment.

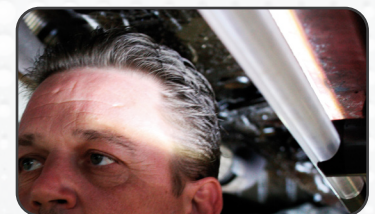
LINE LIGHT 1 consists of 1 lighting unit 1630mm incl 25W power supply unit, cable and complete suspension fittings. With its low voltage (24V DC) system the LINE LIGHT 1 can be installed by yourself.

Available as accessory, the LINE LIGHT DIMMER lets you adjust the light intensity seamlessly.

- “Unbreakable”- extremely sturdy and shockproof
- Waterproof to resist wet and dirty workshop environment
- Low voltage 24V DC
- Technical lifetime of LEDs 100.000 hours
- Made in Denmark



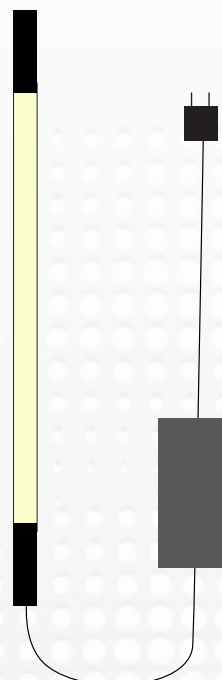
Double lumen output



**TECHNICAL SPECIFICATIONS**

- 216 SMD LED
- 189 lm/W
- 2750 Lumen
- 3000 Lux@0,5m
- 75° Beam angle
- 24V DC
- 26W
- IK07
- IP67
- Ø25 x 1630mm
- 1,4 kg

EU DESIGN  
PATENT  
1882523



**LINE LIGHT 1**  
Item no. 03.5203

